

HP EliteOne 800 G2 23-inch Touch All-in-One PC



Elegant, sleek, user-friendly, and designed to perform, the HP EliteOne 800 is ready to deploy in demanding environments, with manageability and security, enterprise-class collaboration technologies, and touchscreen.²



- Windows 10 Pro¹
- Screen Size: 23" diagonal

Place it here, there, and everywhere

Deploy this redesigned, stylish All-in-One with a 23" diagonal FHD display anywhere you need a powerhouse PC. Its slim design and integrated cable management make an impression at reception, on an executive's desk or mounted on a wall.

Deeply secure

Help secure your PC with comprehensive hardware and software tools like an integrated fingerprint reader and HP BIOSphere with Sure Start's customizable BIOS-level passwords.⁴

Power-packed performance

Drive your most demanding workloads with an All-in-One powered by fast 6th Gen Intel® Core™ processors⁵, plus optional AMD Radeon™ R9 360 discrete graphics² with 2 GB GDDR5 for your most challenging use cases.

Count on premier audiovisual clarity

Collaborate naturally with Cortana⁶ on Windows 10 Pro,¹ optional 10-point capacitive touch,² Audio by Bang & Olufsen, HP Clear Sound Amp, HP Noise Reduction Software, and a 2MP HD webcam.⁷

Featuring

- Help protect from today's security threats and maximize management and productivity features for business with Windows 10 Pro.¹
- Make expansion and upgrades a snap with a tool-less rear access panel.
- Simplify IT manageability with Intel® vPro™⁸ and Windows 10¹ plus HP Common Core BIOS, which enables easy management of your entire fleet of HP devices.
- Rest easy with a PC that passed 120,000 hours of testing and is designed to undergo MIL-STD 810G⁹ testing.
- Get the same HP configuration across the globe, available in more than 180 countries where HP conducts business.
- Make more room with optional, versatile stands² or a space-saving VESA wall mount¹⁰ for a range of use cases.
- Save time and help eliminate the need for cumbersome complicated passwords by using the integrated fingerprint reader.²



HP EliteOne 800 G2 23-inch Touch All-in-One PC Specifications Table



| | |
|-----------------------------------|---|
| Form Factor | All-in-one |
| Available Operating System | Windows 10 Pro 64 ¹ Windows 10 Home 64 ¹ Windows 10 Home Single Language 64 ¹ Windows 7 Professional 64 (available through downgrade rights from Windows 10 Pro) ² Windows 7 Professional 32 (available through downgrade rights from Windows 10 Pro) ² Windows 8.1 Pro 64 ¹ Windows 8.1 64 ¹ Windows 8.1 Single Language 64 ¹ Windows 7 Professional 64 ¹ Windows 7 Professional 32 ¹ Windows 7 Home Basic 64 ¹ Windows 7 Home Basic 32 ¹ NeoKylin Linux 64-bit FreeDOS 2.0 |
| Available Processors | Intel® Core™ i7-6700 with Intel HD Graphics 530 (3.4 GHz, up to 4 GHz with Intel Turbo Boost, 8 MB cache, 4 cores); Intel® Core™ i5-6600 with Intel HD Graphics 530 (3.3 GHz, up to 3.9 GHz with Intel Turbo Boost, 6 MB cache, 4 cores); Intel® Core™ i5-6500 with Intel HD Graphics 530 (3.2 GHz, up to 3.6 GHz with Intel Turbo Boost, 6 MB cache, 4 cores); Intel® Core™ i3-6320 with Intel HD Graphics 530 (3.9 GHz, 4 MB cache, 2 cores); Intel® Core™ i3-6300 with Intel HD Graphics 530 (3.8 GHz, 4 MB cache, 2 cores); Intel® Core™ i3-6100 with Intel HD Graphics 530 (3.7 GHz, 3 MB cache, 2 cores); Intel® Pentium® G4500 with Intel HD Graphics 530 (3.5 GHz, 3 MB cache, 2 cores); Intel® Pentium® G4400 with Intel HD Graphics 510 (3.3 GHz, 3 MB cache, 2 cores) ³ |
| Chipset | Intel® Q170 |
| Maximum Memory | 32 GB DDR4-2133 SDRAM (Transfer rates up to 2133 MT/s) |
| Memory Slots | 2 SODIMM |
| Internal Storage | 500 GB up to 1 TB SATA (7200 rpm) ⁴ 500 GB up to 1 TB SATA SSHD ⁴ 120 GB up to 256 GB SATA SSD ⁴ 128 GB 512 GB SATA 3D SSD ⁴ 120 GB 256 GB SATA SE SSD ⁴ 128 GB 256 GB Turbo Drive (M.2 PCIe SSD) ⁴ |
| Optical Drive | Slim Tray-load DVD-ROM; Slim Tray-load SuperMulti DVD writer; Slim Tray-load SATA BDXL Blu-ray writer ^{5,6} |
| Display | 23" diagonal IPS widescreen backlight 10-point capacitive touch LCD (1920 x 1080) |
| Available Graphics | Integrated: Intel® HD Graphics ⁸ Discrete: AMD Radeon™ R9 360 (2 GB) (Intel® HD Graphics integrated on processor) |
| Audio | Audio by Bang and Olufsen utilizing HP Clear Sound Amp which supports the integrated high-performance stereo 2.2W internal speakers, microphone array, headphone jack, line-out jack and a microphone jack that is retaskable to second headphone or line in. |
| Communications | LAN: Intel® i219M GbE WLAN: Intel® 8260 802.11ac wireless M.2 with Bluetooth®; Intel® 8260 802.11ac wireless M.2; Broadcom BCM943228Z 802.11n wireless M.2 with Bluetooth®; Broadcom BCM943228Z 802.11n wireless M.2 ⁷ |
| Expansion Slots | 1 M.2 2230; 1 M.2 2280 (M.2 2230 slot for WLAN; M.2 2280 slot for SSD) |
| Ports and Connectors | Left: 1 USB Type-C™; 2 USB 3.0 (1 charging); 1 headphone; 1 microphone; 1 SD 4 reader (optional) Right: 1 fingerprint reader Back: 4 USB 3.0; 1 DisplayPort 1.2; 1 RJ-45; 1 audio line out; 1 serial (optional); 2 PS/2 (keyboard/mouse) optional |
| Internal Drive Bays | Two 2.5" |
| External Drive Bays | One slim ODD (optional); One SD 4 card reader (optional) |
| Camera | 2 MP full HD webcam (optional) |
| Available Software | HP business PCs are shipped with a variety of software titles including: HP Drive Encryption (FIPS 140-2), HP Client Security, HP Security Manager, Microsoft Security Essentials, CyberLink Power2Go, Native Miracast Support, HP ePrint Driver, HP Recovery Manager, Foxit Reader, HP PhantomPDF Express. Please refer to this product's quick spec document for a full list of preinstalled software. ^{10,11,12} |

| | |
|------------------------------|---|
| Security Management | Integrated fingerprint reader; HP BIOSphere with Sure Start; HP Touchpoint Manager; Infineon TPM SLB9670 1.2/2.0 (Common Criteria EAL4+ certified); Security lock slot; Support for Noble Locking Plate (third-party option); Intrusion detection system; Ultralock cable lock (optional); SATA port disablement (via BIOS); DriveLock and Automatic DriveLock; RAID (available as a configurable option); Serial, parallel, USB enable/disable (via BIOS); Optional USB port disable at factory (user configurable via BIOS); Removable media write/boot control; Power-on password (via BIOS); Setup password (via BIOS) ^{13,14,15,16} |
| Management Features | Intel® vPro™ Technology capable (select models) |
| Power | 160 W, up to 90% efficient, active PFC (with integrated graphics); 200 W, up to 92% efficient, active PFC (with discrete graphics) |
| Dimensions | 22.3 x 2.3 x 15.5 in 567.1 x 58.9 x 392.7 mm (Without stand but with non-stand VESA cover) |
| Weight | 16.2 lb 7.34 kg (Weight without stand but with non-stand VESA cover. Exact weight depends on configuration.) |
| Environmental | Low halogen ¹⁸ |
| Energy Efficiency Compliance | ENERGY STAR® certified and EPEAT® registered configurations available ¹⁷ |

HP EliteOne 800 G2 23-inch Touch All-in-One PC

Accessories and services (not included)

HP Single Monitor Arm



The HP Single Monitor Arm is the perfect desk accessory for your work life. Sleek and streamlined, the HP Single Monitor Arm is designed to complement the way you work.

Product number: BT861AA

HP 3D 256GB SATA Solid State Drive



Expand the storage capabilities of your desktop with the HP 3D 256 GB SATA SSD¹, which includes 3D VNAND flash for impressive read/write performance and reliability plus the same solid performance you already get from current from SSD drives.

Product number: N1M49AA

HP USB Conference Keyboard



Drive your Microsoft Lync voice and video calls directly from your HP USB Conference Keyboard and connect, disconnect, and manage your calls and videoconferencing settings with simple dedicated keys¹.

Product number: N8N57AA

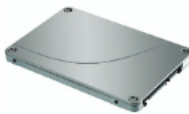
HP 8GB SODIMM DDR4 Memory



Boost the capabilities of your HP Business Desktop PC and improve system performance and application responsiveness with low-power, high-speed DDR4 memory from HP.

Product number: P1N54AA

HP 500GB Solid State Hybrid Drive (SSHD)



Get the responsiveness of solid state memory and the capacity of a hard drive in a highly affordable package with the HP 500GB SATA 6G 2.5 (8GB Cache) solid state hybrid drive (SSHD), which delivers fast boot-up, shut down, and application loading.

Product number: E1C62AA

Messaging Footnotes

¹ Not all features are available in all editions or versions of Windows. Systems may require upgraded and/or separately purchased hardware, drivers and/or software to take full advantage of Windows functionality. Windows 10 is automatically updated, which is always enabled. ISP fees may apply and additional requirements may apply over time for updates. See <http://www.microsoft.com>.

² Sold separately or as an optional feature.

³ HP BIOSphere features may vary depending on the PC platform & configuration.

⁴ Multi-Core is designed to improve performance of certain software products. Not all customers or software applications will necessarily benefit from use of this technology. Performance and clock frequency will vary depending on application workload and your hardware and software configurations. Intel's numbering is not a measurement of higher performance.

⁵ Cortana experience may vary by device, region.

⁶ Speakers and web cam are offered as standard features but may be deselected during the ordering process.

⁷ Some functionality of vPro, such as Intel® Active Management Technology and Intel Virtualization Technology, requires additional third party software in order to run. Availability of future "virtual appliances" applications for Intel vPro technology is dependent on third party software providers. Microsoft Windows required.

⁸ MIL-STD testing is pending and is not intended to demonstrate fitness for U.S. Department of Defense contract requirements or for military use. Test results are not a guarantee of future performance under these test conditions. Accidental damage or damage under the MIL STD test conditions requires an optional HP Accidental Damage Protection Care Pack.

⁹ Mounting hardware required and sold separately.

Technical Specifications Footnotes

¹ Not all features are available in all editions or versions of Windows. Systems may require upgraded and/or separately purchased hardware, drivers, software or BIOS update to take full advantage of Windows functionality. Windows 10 is automatically updated, which is always enabled. ISP fees may apply and additional requirements may apply over time for updates. See <http://www.microsoft.com>.

² This system is preinstalled with Windows 7 Professional software and also comes with a license and media for Windows 10 Pro software. You may only use one version of the Windows software at a time. Switching between versions will require you to uninstall one version and install the other version. You must back up all data (files, photos, etc.) before uninstalling and installing operating systems to avoid loss of your data.

³ Multi-Core is designed to improve performance of certain software products. Not all customers or software applications will necessarily benefit from use of this technology. Performance and clock frequency will vary depending on application workload and your hardware and software configurations. Intel's numbering is not a measurement of higher performance.

⁴ For storage drives, GB = 1 billion bytes, TB = 1 trillion bytes. Actual formatted capacity is less. Up to 16 GB (for Windows 7) and up to 36 GB (for Windows 8.1 and 10) of system disk is reserved for system recovery software.

⁵ Duplication of copyrighted material is strictly prohibited. Actual speeds may vary. Double Layer media compatibility will widely vary with some home DVD players and DVD-ROM drives. Note that DVD-RAM cannot read or write to 2.6GB Single Sided/5.2 Double Sided-Version 1.0 Media.

⁶ With Blu-Ray drive XL, certain disc, digital connection, compatibility and performance issues may arise, and do not constitute defects in the product. Flawless playback on all systems is not guaranteed. In order for some Blu-ray titles to play, they may require an HDCP path and HDCP display. HD-DVD movies cannot be played on this BD-XL Drive.

⁷ Wireless cards are optional or add-on features and requires separately purchased wireless access point and internet service. Availability of public wireless access points limited. The specifications for the 802.11ac WLAN are draft specifications and are not final. If the final specifications differ from the draft specifications, it may affect the ability of this desktop PC to communicate with other 802.11ac WLAN devices.

⁸ HD content required to view HD images.

⁹ Optional or add-on feature.

¹⁰ HP ePrint requires an Internet connection to HP web-enabled printer and HP ePrint account registration (for a list of eligible printers, supported documents and image types and other HP ePrint details, see www.hp.com/go/businessmobileprinting).

¹¹ Microsoft Security Essentials requires Windows 7 and Internet access.

¹² Miracast is a wireless technology your PC can use to project your screen to TVs, projectors, and streaming media players that also support Miracast. You can use Miracast to share what you're doing on your PC and present a slide show. Miracast is available for Windows 8 and Windows 10. For more information: <http://windows.microsoft.com/en-us/windows-8/project-wireless-screen-miracast>.

¹³ HP Touchpoint Manager requires purchase of a subscription and supports Android™, iOS and Windows 7 or higher operating systems and PCs, notebooks, tablets and smartphones from various manufacturers. Not available in all countries see www.hp.com/touchpoint for availability information.

¹⁴ Noble Locking Plate for use with HP Recline Stand and HP Adjustable Height Stand

¹⁵ HP BIOSphere available only on business PCs with HP BIOS.

¹⁶ Firmware TPM is version 2.0. Hardware TPM is v1.2, which is a subset of the TPM 2.0 specification version v0.89 as implemented by Intel Platform Trust Technology (PTT).

¹⁷ EPEAT® registered where applicable. EPEAT registration varies by country. See www.epeat.net for registration status by country.

¹⁸ External power supplies, power cords, cables and peripherals are not low halogen. Service parts obtained after purchase may not be low halogen.

Sign up for updates
hp.com/go/getupdated

Learn more at
hp.com

The product could differ from the images shown. © 2015 Hewlett-Packard Development Company, L.P. The information contained herein is subject to change without notice. Specific features may vary from model to model. The only warranties for HP products and services are set forth in the express warranty statements accompanying such products and services. Nothing herein should be construed as constituting an additional warranty. HP shall not be liable for technical or editorial errors or omissions contained herein.

ENERGY STAR and the ENERGY STAR mark are registered trademarks owned by the U.S. Environmental Protection Agency. Bluetooth is a trademark of its proprietor used by Hewlett-Packard Company under license. Intel and Core are trademarks of Intel Corporation in the U.S. and other countries. Linux® is the registered trademark of Linus Torvalds in the U.S. and other countries. AMD and Radeon are trademarks of Advanced Micro Devices, Inc. For DTS patents, see <http://patents.dts.com>. Manufactured under license from DTS Licensing Limited. DTS, the Symbol, & DTS and the Symbol together are registered trademarks, and DTS Studio Sound is a trademark of DTS, Inc. © DTS, Inc. All Rights Reserved. All other trademarks are the property of their respective owners.

